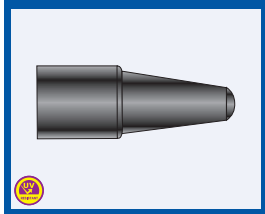




ACCESSORIES

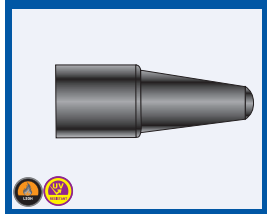
Long Shroud



Product Code	Size Ref	Metric Size
1523-0	0	M20
152301	1	M20
152302	2	M25
152303	3	M32
152304	4	M40
152305	5	M50
152306	6	M63
152307	7	M75
152308	8	M80

All dimensions are in mm.

LSOH Long Shroud



Product Code	Size Ref	Metric Size
1524-0	0	M20
152401	1	M20
152402	2	M25
152403	3	M32
152404	4	M40
152405	5	M50
152406	6	M63
152407	7	M75
152408	8	M80

All dimensions are in mm.

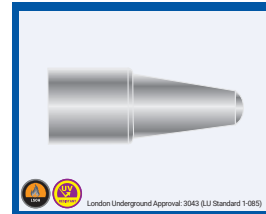
LSOH Grey Shroud



Product Code	Size Ref	Metric Size
1526-0	0	M20
152601	1	M20
152602	2	M25
152603	3	M32
152604	4	M40
152605	5	M50
152606	6	M63
152607	7	M75
152608	8	M80
152609	9	M90
152610	10	M100
152611	11	M110

All dimensions are in mm.

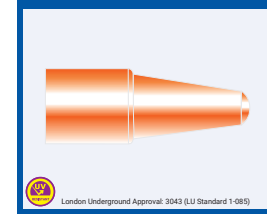
LSOH-U Shroud Grey Long



Product Code	Size Ref	Metric Size
1528-0	0	M20
152801	1	M20
152802	2	M25
152803	3	M32
152804	4	M40

All dimensions are in mm.
For sizes larger than 4 use LSOH Shroud Grey Long.

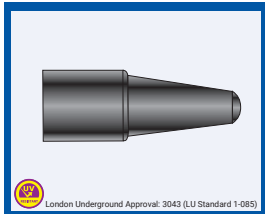
PVC-U Shroud Orange Long



Product Code	Size Ref	Metric Size
1527-0-OR	0	M20
152701-OR	1	M20
152702-OR	2	M25
152703-OR	3	M32
152704-OR	4	M40
152705-OR	5	M50
152706-OR	6	M63
152707-OR	7	M75
152708-OR	8	M80
152709-OR	9	M90
152710-OR	10	M100

All dimensions are in mm.

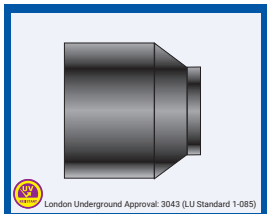
PVC-U Shroud Black Long



Product Code	Size Ref	Metric Size
1527-0	0	M20
152701	1	M20
152702	2	M25
152703	3	M32
152704	4	M40

All dimensions are in mm.
For sizes larger than 4 use PVC Shroud Black Long.

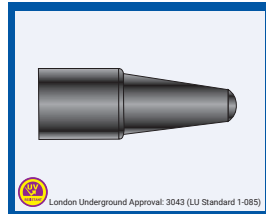
PVC Short Shroud



Product Code	Size Ref	Metric Size
1522-0	0	M20
152201	1	M20
152202	2	M25
152203	3	M32
152204	4	M40
152205	5	M50
152206	6	M63
152207	7	M75
152208	8	M80
152209	9	M90
152210	10	M100

All dimensions are in mm.

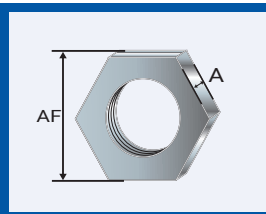
PVC Long Shroud



Product Code	Size Ref	Metric Size
1525-0	0	M20
152501	1	M20
152502	2	M25
152503	3	M32
152504	4	M40
152505	5	M50
152506	6	M63
152507	7	M75
152508	8	M80
152509	9	M90
152510	10	M100
152511	11	M110/115
152512	12	M120
152513	13	M130

All dimensions are in mm.

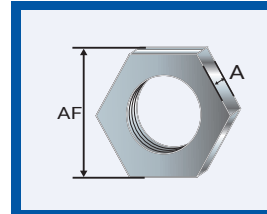
Brass Locknut Metric (Nickel Plated)



Product Code	Size Ref	Metric Size	Across Flats	THICK (A)
300901-M16	0	M16x1.5	22.0	4.0
300901	1	M20x1.5	25.0	5.0
300902	2	M25x1.5	32.0	5.0
300903	3	M32x1.5	42.0	5.0
300904	4	M40x1.5	60.0	5.0
300905	5	M50x1.5	60.0	6.0
300906	6	M63x1.5	80.0	6.0
300907	7	M75x1.5	90.0	7.0
300908	8	M80x2.0	96.0	8.0
300909	9	M90x2.0	111.0	8.0

All dimensions are in mm.

Brass Locknut NPT (Nickel Plated)

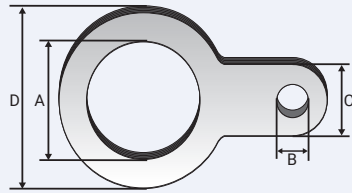


Product Code	Size Ref	NPT Size	Across Flats	THICK (A)
300901-12NPT	1	½ NPT	25	4.5
300902-34NPT	2	¾ NPT	32	4.5
300903-1NPT	3	1 NPT	38	5.0
300904-1¼NPT	4	1¼ NPT	52	5.0
300905-1½NPT	5	1½ NPT	52	5.0
300906-2NPT	6	2 NPT	65	6.0
300907-2½NPT	7	2½ NPT	80	8.0
300908-3NPT	8	3 NPT	96	8.0
300909-3½NPT	9	3½ NPT	111	10.0
300910-4NPT	10	4 NPT	127	10.0

All dimensions except NPT are in mm.

Hybrid Slip-On Earth Tag

NICKEL PLATED BRASS OR STAINLESS STEEL 316/316L

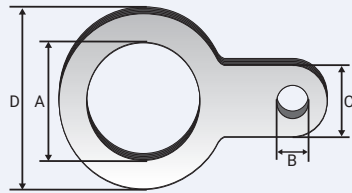


Product Code	Size Ref.	Diameter 'A'	Diameter 'B'	Dimension 'C'	Diameter 'D'	Square Section	Nominal Thickness	Short Circuit Fault Current Ratings BS6121 Part 5: 1993
622801	0/1	M20	7.0	12 x 1.5	37.0	18mm ²	1.5	20.0 3.06KA / 1 second
622802	2	M25	7.0	12 x 1.5	47.0	18mm ²	1.5	25.0 4.00KA / 1 second
622803	3	M32	13.0	22 x 1.5	54.0	33mm ²	1.5	32.0 5.40KA / 1 second
622804	4	M40	13.5	32 x 1.5	69.0	48mm ²	1.5	40.0 7.20KA / 1 second
622805	5	M50	13.5	40 x 1.5	87.0	60mm ²	1.5	50.0 10.40KA / 1 second
622806	6	M63	13.5	40 x 1.5	115.0	60mm ²	1.5	63.0 10.40KA / 1 second
622807	7	M75	13.5	40 x 1.5	130.0	60mm ²	1.5	75.0 10.40KA / 1 second
622808	8	M80	13.5	40 x 1.5	130.0	60mm ²	1.5	- -
622809	9	M90	13.5	40 x 1.5	142.0	60mm ²	1.5	- -
622810	10	M100	13.5	40 x 1.5	154.0	60mm ²	1.5	- -

All dimensions are in mm.

Slip-On Earth Tag

NICKEL PLATED BRASS OR STAINLESS STEEL 316/316L

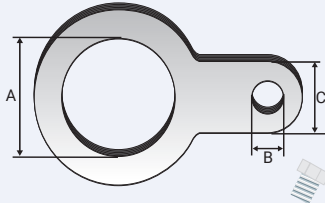


Product Code	Size Ref.	Diameter 'A'	Diameter 'B'	Dimension 'C'	Diameter 'D'	Square Section	Nominal Thickness	Short Circuit Fault Current Ratings BS6121 Part 5: 1993
6220-1	0/1	M20	7.0	12 x 1.5	28.0	18mm ²	1.5	20.0 3.06KA / 1 second
622902	2	M25	7.0	12 x 1.5	35.0	18mm ²	1.5	25.0 4.00KA / 1 second
622903	3	M32	13.0	22 x 1.5	45.5	33mm ²	1.5	32.0 5.40KA / 1 second
622904	4	M40	13.5	32 x 1.5	54.0	48mm ²	1.5	40.0 7.20KA / 1 second
622905	5	M50	13.5	40 x 1.5	65.0	60mm ²	1.5	50.0 10.40KA / 1 second
622906	6	M63	13.5	40 x 1.5	83.0	60mm ²	1.5	63.0 10.40KA / 1 second
622907	7	M75	13.5	40 x 1.5	98.0	60mm ²	1.5	75.0 10.40KA / 1 second
622908	8	M80	13.5	40 x 1.5	98.0	60mm ²	1.5	- -
622909	9	M90	13.5	40 x 1.5	115.0	60mm ²	1.5	- -

All dimensions are in mm.

Screw-On Earth Tag

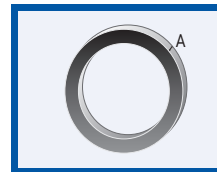
NICKEL PLATED BRASS OR STAINLESS STEEL 316/316L



Product Code	Size Ref.	Diameter 'A'	Diameter 'B'	Dimension 'C'	Square Section	Nominal Thickness	Short Circuit Fault Current Ratings BS6121 Part 5: 1993
60320-1	0/1	M20	M6	10 x 3	30mm ²	3.0	20.0 26KA / 1 second
603202	2	M25	M6	10 x 4	40mm ²	4.0	25.0 26KA / 1 second
603203	3	M32	M6	12 x 6	70mm ²	6.0	32.0 26KA / 1 second
603204	4	M40	M8	20 x 6	120mm ²	6.0	40.0 26KA / 1 second
603205	5	M50	M10	24 x 8	185mm ²	8.0	50.0 43KA / 1 second
603206	6	M63	M12	40 x 8	300mm ²	8.0	63.0 43KA / 1 second
603207	7	M75	M12	40 x 8	300mm ²	8.0	75.0 43KA / 1 second
603208	8	M82	M12	40 x 8	300mm ²	8.0	- -
603209	9	M90	M12	40 x 8	300mm ²	8.0	- -

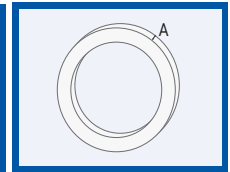
All dimensions are in mm.

Sealing Gasket Metric



Sealing Gasket HT Metric

High Temperature



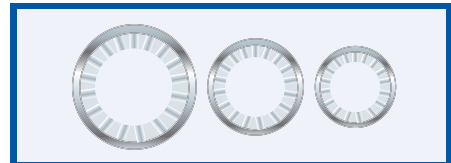
Product Code	Metric Size	Thck 'A'	Product Code	Metric Size	Thck 'A'
805520	M20	2.0	805520-T	M20	2.0
805525	M25	2.0	805525-T	M25	2.0
805532	M32	2.0	805532-T	M32	2.0
805540	M40	2.0	805540-T	M40	2.0
805550	M50	2.0	805550-T	M50	2.0
805563	M63	2.0	805563-T	M63	2.0
805575	M75	2.0	805575-T	M75	2.0
805580	M80	2.0	805580-T	M80	2.0
805590	M90	2.0	805590-T	M90	2.0

All dimensions are in mm.

All dimensions are in mm.

Serrated Washer

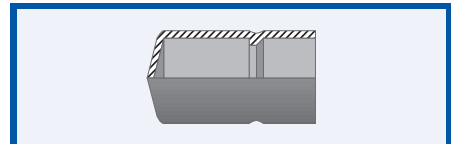
STAINLESS STEEL 316/316L



Product Code	Metric Size
805620	M20
805625	M25
805632	M32
805640	M40
805650	M50
805663	M63
805675	M75
805680	M80
805690	M90

All dimensions are in mm.

Insulation Sleeve



Product Code	Size Reference
550502	2

All dimensions are in mm.

Terminal Connector



Product Code	Size Ref.	Hole Diameter	Allen Key No.
580302	2	10.0	4.0

All dimensions are in mm.